



Standing Conference
of Towns and Municipalities

National Association of Local Authorities in Serbia

60 years

FOUNDED IN 1953.

Capacity building for urban development in SEE –

Click to edit Master subtitle style



03.06.13

11



SCTM is the place for:

- Gathering, discussing issues and challenges relevant for local self-government, formulating and representing joint interests of local governments
- Advocating for the interests of local government and lobbying the central authorities as they define strategic initiatives and adopt regulations important for local governments
- Supporting cities and municipalities to build capacities, define and implement their strategic goals, prepare and implement projects and access financial resources.

SCTM MISSION is to support the strengthening of local self-government in Serbia through mutual cooperation and joint action of towns and municipalities, represent their common interests and improvement of their

WB - Austria Urban partnership Program

- strengthening capacity for urban development in South-East Europe (SEE).
- The objective: to assist and support cities and local governments in SEE in a process of modernization and reform, in order to promote local development for inclusive and sustainable growth, and enhanced urban governance.
- While global in scope, this Program is targeted at 7 South-East European countries, including Serbia.
- Based on demand, the Program offers a series of City to City Dialogues on Municipal Finance, Urban Planning and Land Management, and Municipal Service Delivery, as well as leadership training and urban governance/anti-corruption capacity building activities.

Challenges of cities in SEE

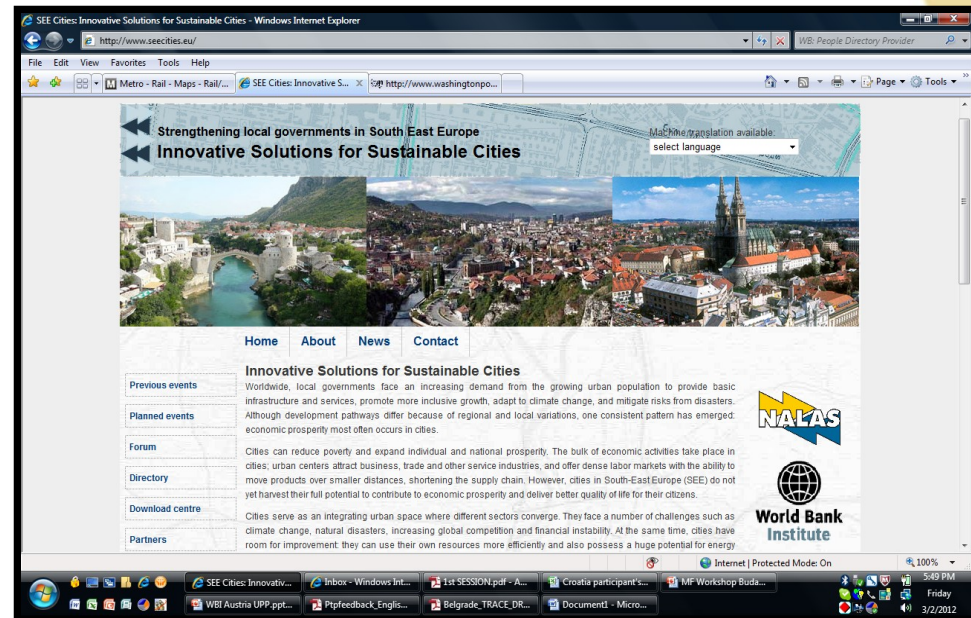
- greater responsibilities of local self governments through administrative, political and fiscal decentralization processes launched in the late 1990s/early 2000s;
- developing sustainable approaches to meet EU pre-accession requirements and the EU directives, including environmental directives,
- challenges to effectively absorb EU pre-accession and structural funding;
- putting in place sustainable technologies;
- limited leadership capacity.

WB e-Institute Urban Curriculum of e-Learning Courses

- WBI Urban e-learning courses for local government officials, municipal practitioners and decision makers are offered to SEE constituents under the e-Institute.
- This curriculum is organized under four key thematic lines: Urban Planning and Land Management, Municipal Finances and Governance, Urban Service Delivery, and Safe and Resilient Cities.
- These topics directly respond to the needs of local governments, and are of high relevance to the SEE cities and municipalities. The e-courses provide a body of knowledge with an emphasis on the “how to” of reforms, global content and regional or local practical examples, and a platform for

How cities learn

WBI Urban perspective



03.06.13

Structure of the course

- Reading materials – scripts
- Case studies
- Additional readings
- Quizzes
- Assignments
- Forums – focus on interaction and exchange between professionals
- Self paced and facilitated version

Tracking





Tracking

Calendar

◀ May 2013 ▶

Sun	Mon	Tue	Wed	Thu	Fri	Sat
			1	2	3	4
5	6	7	8	9	10	11
12	13	14	15	16	17	18
19	20	21	22	23	24	25
26	27	28	29	30	31	

Events key

-  Global
-  Course
-  Group
-  User

Latest news

Add a new topic...

28 Mar, 19:50

Klara Danilovic

Feedback more...

27 Mar, 16:06

Soumya Dharmavaram

A final word more...

26 Mar, 17:53

Soumya Dharmavaram

The course ends today more...

25 Mar, 19:10

Soumya Dharmavaram

Module 7 more...

20 Mar, 14:58

Sustainable Urban Land Use Planning

Urbanization is the defining global phenomenon of this century. For the first time in history, more than half of the world's population lives in urban areas. Between 2000 and 2030, in developing countries, the urban population is expected to double, and the entire built-up area is projected to triple if current trends continue. This rapid demographic and spatial transformation will be difficult for cities in developing countries to cope with, especially small and medium sized cities, where capacity is typically inadequate to manage major urban challenges, i.e. **climate change**, resource scarcity, increased poverty and informality, and safety and security concerns. [More...](#)

01

Importance of Land Use Planning

Urbanization is a defining phenomenon of this century. For the first time in history more than half...

02

Institutions, Policies and Tools

Importance of institutional capacity building, urban planning and management in developing countries...

03

Land Use and Infrastructure

Outline the basic relationship between land use and infrastructure...

04

Peri-Urban Growth

Analyze the nature of urban expansion in the peri-urban areas of cities...

05

Land Use and Local Economic Development

Establish the relationships between globalization processes, local...

06

Land Use and Social Equity

How land use planning influences urban poverty and socio-economic disparity...

07

Climate Change and Land Use Planning

Climate has a direct effect on the way we live, work and recreate now and in the future...

We would like you to check out other related courses. You can view on our e-institute portal site and here are links.



A Cities and climate change e-learning course

Course Introduction
Catherine Farvacqu
Vitkovic & Mansha C

Course Map







Presentation



Start presentation

PDF Presentation s

Activities

-  Quiz
-  Assignment
-  eDiscussions
-  Course feedback

Resources

-  Case studies



Sustainable land use planning

COURSE

- Importance of land use planning
- Land use policies, instruments and tools
- How to integrate Land use and infrastructure planning
- How to manage growth in Peri-urban areas
- How to promote Local economic development through land use planning
- Social equity

Outcomes

- Almost 100 local practitioners have completed the course successfully
- Majority from Serbian municipalities
- Recruiting participants, facilitation - SCTM
- Planners, city officials, LED officials...
- Constraints – language barriers, regional context

Next steps

- Compilation of regional case studies
- Putting the content into regional context
- Offering the course in local languages through NALAS
- Next delivery – September 2013

Thank you for your attention!

- <http://einstitute.worldbank.org>
- <http://www.seecities.eu>
- <http://www.skgo.org>

- Klara.danilovic@skgo.org
- tnikolic@worldbank.org